



# Optimizing natural light in buildings helps provide a better experience for all of us.

3M™ Daylight Redirecting Film is a simple, effective daylighting solution which comfortably brings natural light deeper into buildings.

**Buildings with abundant natural light have been shown to:**

- ▶ Increase employee productivity
- ▶ Boost retail sales
- ▶ Improve student test scores
- ▶ Decrease rates of absenteeism
- ▶ Improve patient recovery times
- ▶ Reduce energy costs



See the world in a different light  
with 3M™ Daylight Redirecting Film



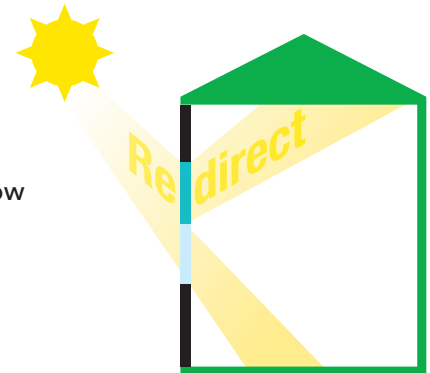
3M™ Daylight Redirecting Film installed in Clerestory Glass — Sacramento, CA

## Naturally brighten your day.

3M™ Daylight Redirecting Film is designed to move excess light close to the window and redirect it deeper into the building to increase the daylighting penetration. Bringing natural light deeper into the building helps provide the many benefits of natural light for more occupants as well as helping reduce the need for artificial lighting which can save energy.

In addition, 3M Daylight Redirecting Film:

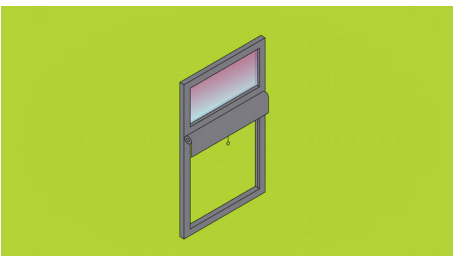
- ▶ Reduces glare and discomfort caused by direct sunlight on occupants
- ▶ Redirects natural light as much as 40 ft. or more into the building
- ▶ Extends daylight zone up to 8 ft. into the interior for every 1 ft. of treated window
- ▶ Can provide up to 52% lighting energy savings compared to baseline usage
- ▶ Can provide savings of up to 1.5 kwh/sq.ft. of floor area



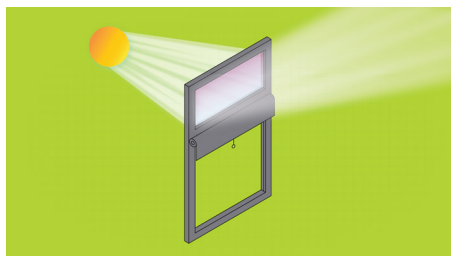
## Simple, effective, daylighting solution.

Compared to existing light reflecting strategies, 3M Daylight Redirecting Film is easily integrated into new or existing windows. It requires no extra hardware or infrastructure, and little to no additional maintenance or special cleaning. It works at all times of the day, even when the sun is at a low angle. Plus, it's more cost effective than many existing daylighting solutions.

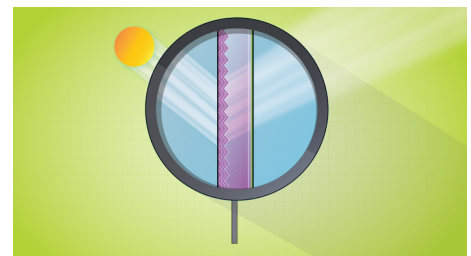
## How it Works



3M Daylight Redirecting Film is installed in the upper portion of the window.



Daylight is redirected upwards towards the ceiling allowing natural light to comfortably penetrate deeper into the building.



Made of micro-structured prisms, the film optically redirects over 80% of the daylight upward and diffuses light to be more evenly distributed.

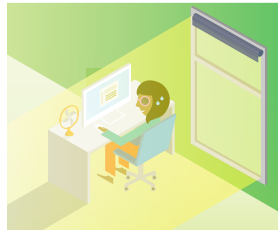
# Increase natural light and comfort.

## Clear Glass Windows



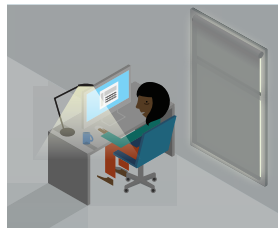
### When Shades are Open\*

Direct sunlight can beam into the space at low angles, causing glare and discomfort.



### When Shades are Closed\*

Shades are closed to block uncomfortable direct sunlight, which also decreases natural light in the space.



## 3M™ Daylight Redirecting Film

Installed in Upper Clerestory Windows



### When Shades are Open\*

The light from the upper glass is redirected to the ceiling, increasing natural light and decreasing glare in the space caused by direct sunlight.



### When Shades are Closed\*

Even when the vision glass shades are drawn, natural light continues to penetrate into the space through the clerestory glass with 3M Daylight Redirecting Film.

# Case Studies

## Six U.S. Department of Energy Facilities

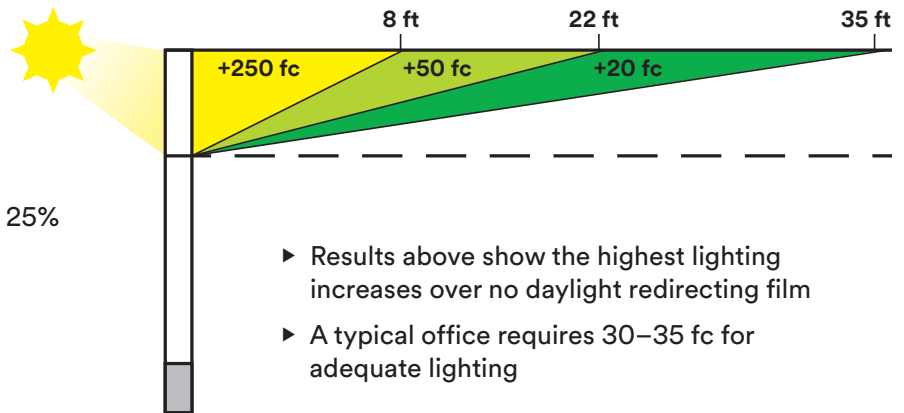
ESTCP Program

### Locations

- ▶ Washington, California (2), Texas, Virginia, Rhode Island

### Results

- ▶ Increased the naturally lit floorspace by 25%
- ▶ Up to 52% lighting energy savings



## Sacramento Municipal Utilities Department

### Location

- ▶ Sacramento, California

### Comparison

- ▶ 3M™ Daylight Redirecting Film
- ▶ Daylight Redirecting Blinds
- ▶ Light Shelf

### Results

- ▶ 3M Daylight Redirecting Film outperformed redirecting blinds and light shelves



3M™ Daylight Redirecting Film (Daylighting Zone)



Daylight Redirecting Blinds (Daylighting Zone)



Light Shelf (Daylighting Zone)

Daylit Zone	3M™ Daylight Redirecting Film (Daylighting Zone)	Daylight Redirecting Blinds (Daylighting Zone)	Light Shelf (Daylighting Zone)
1	74.0	57.5	58.9
2	45.1	36.4	37.0
3	26.7	23.9	16.0

Handheld illuminance readings on a sunny, winter day with electric lighting entirely off (Jan. 7th, 2012, 11:30 am).

## Design with Daylight

Looking to do something unique with your building? 3M Daylight Redirecting Film can be applied into any design of your choosing. Apply a fritted, striped, or even diamond pattern and design with daylight in mind!

## Learn more at [3M.com/daylighting](http://3M.com/daylighting)

**Warranty and Limited Remedy:** 3M warrants that each 3M product meets the applicable 3M product specification at the time 3M ships the product. 3M MAKES NO OTHER EXPRESS OR IMPLIED WARRANTIES OR CONDITIONS, INCLUDING ANY IMPLIED WARRANTY OR CONDITION OF MERCHANTABILITY OR FITNESS FOR A PARTICULAR PURPOSE. If the 3M product does not conform to this warranty, the sole and exclusive remedy is, at 3M's option, replacement of the 3M product or refund of the purchase price. **Limitation of Liability:** Except where prohibited by law, 3M will not be liable for any loss or damage arising from the 3M product, whether direct, indirect, special, incidental or consequential, regardless of the legal theory asserted.



3M Commercial Solutions Division  
3M Center, Building 220-12E-04  
St. Paul, MN 55144-1000  
[3M.com/daylighting](http://3M.com/daylighting)

3M is a trademark of 3M.  
Used under license in Canada.

Please recycle. Printed in the U.S.A.  
© 3M 2017. All rights reserved.  
98-0150-0902-4